

SSV SERIES

VERTICAL MULTISTAGE CENTRIFUGAL PUMPS

Highly reliable and technologically advanced multipurpose pumps capable of satisfying the needs of a wide variety of users. Many different construction designs are available, with models featuring 2-4-8-16-30-60 m³/h nominal capacities.

- ❑ **HIGH HYDRAULIC EFFICIENCY**
- ❑ **LIQUID END MANUFACTURED IN AISI 304 STAINLESS STEEL FOR THE 2-4-8-16 m³/h STANDARD VERSION**
- ❑ **“N” VERSION AVAILABLE MADE OF AISI 316 STAINLESS STEEL**
- ❑ **VERSIONS WITH 4-POLE AND/OR 60 Hz MOTOR ARE AVAILABLE ON REQUEST**
- ❑ **MOTOR CAN BE REPLACED WITH ANY STANDARD MODEL AVAILABLE ON THE MARKET**
- ❑ **“DPS” HIGH-PRESSURE UNITS, CONSISTING OF TWO SSV “N” PUMPS CONNECTED IN SERIES**

APPLICATIONS

- Water transfer and circulation in the civil, industrial and agricultural sectors.
- Pressure boosting and water supply systems.
- Irrigation systems for agriculture and sporting facilities.
- Washing systems.
- Boiler feed.
- Water treatment and reverse osmosis plants.
- Fountains.
- Handling of moderately aggressive liquids.

SPECIFICATIONS

- **Delivery:** up to **72 m³/h**.
- **Head:** up to **247 m**.
- **Maximum operating pressure:** **16/25 bar**, depending on model.
- **Continuous duty.**
- **Temperature of pumped liquid:** **-20°C to +120°C**.
- Versions:
 - Single-phase** 220-240 V 50 Hz (up to 2.2 kW).
 - Three-phase** 220-240/380-415 V 50 Hz up to 3 kW (included), and 380-415/660 V for higher power (up to 22 kW).
- Class **F** insulation.

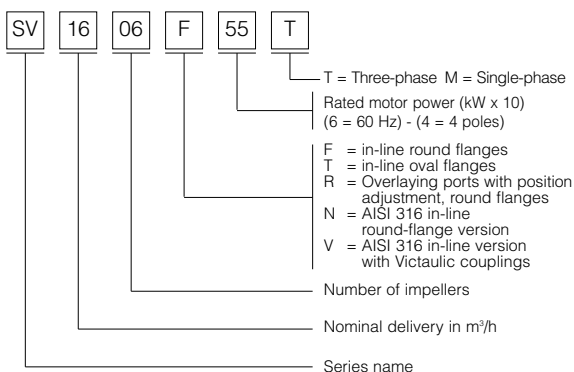


- **IP55 protection.**
- Threaded, round or oval **counterflanges** made of zinc-plated steel are **standard supply**.
- **Version with HYDROVAR frequency converter (variable speed) is available on request.**
- Versions with 4-pole motor are available on request.

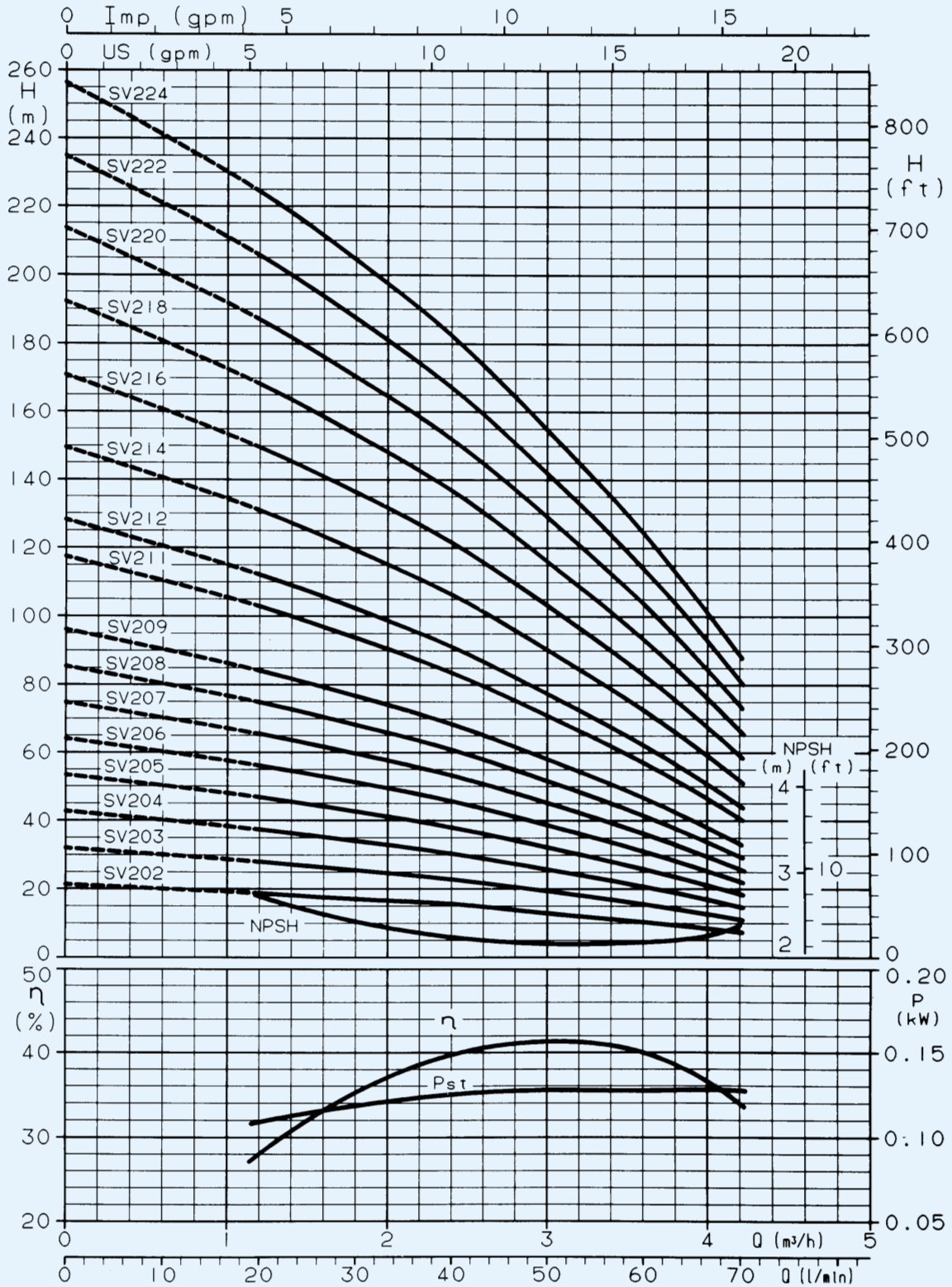
AVAILABLE VERSIONS

VERSIONS	SV 2	SV 4	SV 8	SV 16	SV 30	SV 60
In-line ports with oval flanges	X	X	X			
In-line ports with round flanges	X	X	X	X	X	X
Overlying ports with position adjustment	X	X	X			
AISI 316 stainless steel liquid end	X	X	X	X	X	X
4-pole version	X	X	X	X	X	X
Horizontal version on brackets	X	X	X	X	X	X
With connectors for Victaulic coupling	X	X	X	X		

IDENTIFICATION CODE

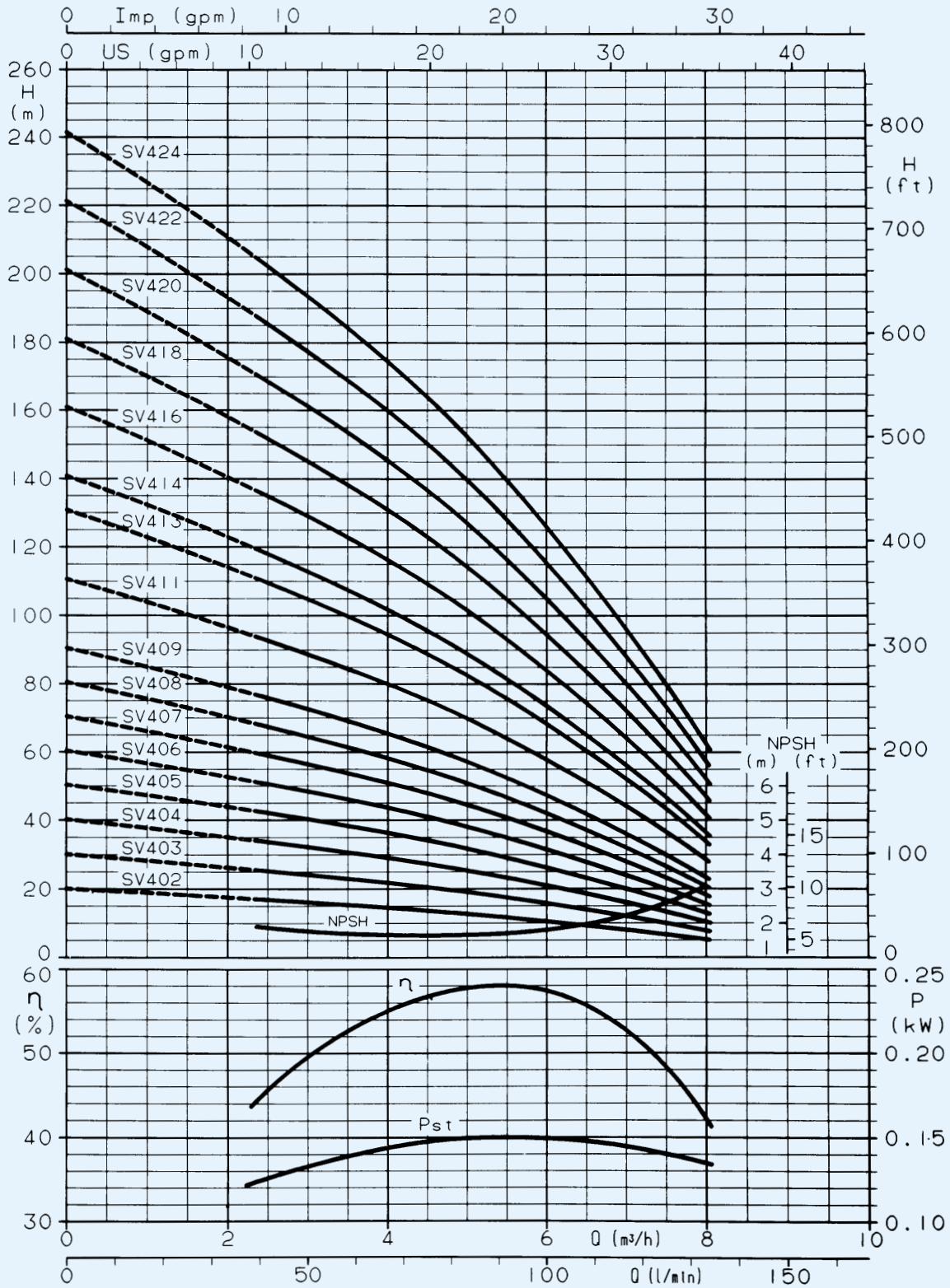


**SV2 SERIES
OPERATING CHARACTERISTICS AT 2900 rpm 50 Hz**



These performances are valid for liquids with density $\rho = 1.0 \text{ kg/dm}^3$ and kinematic viscosity $\gamma = 1 \text{ mm}^2/\text{sec}$.

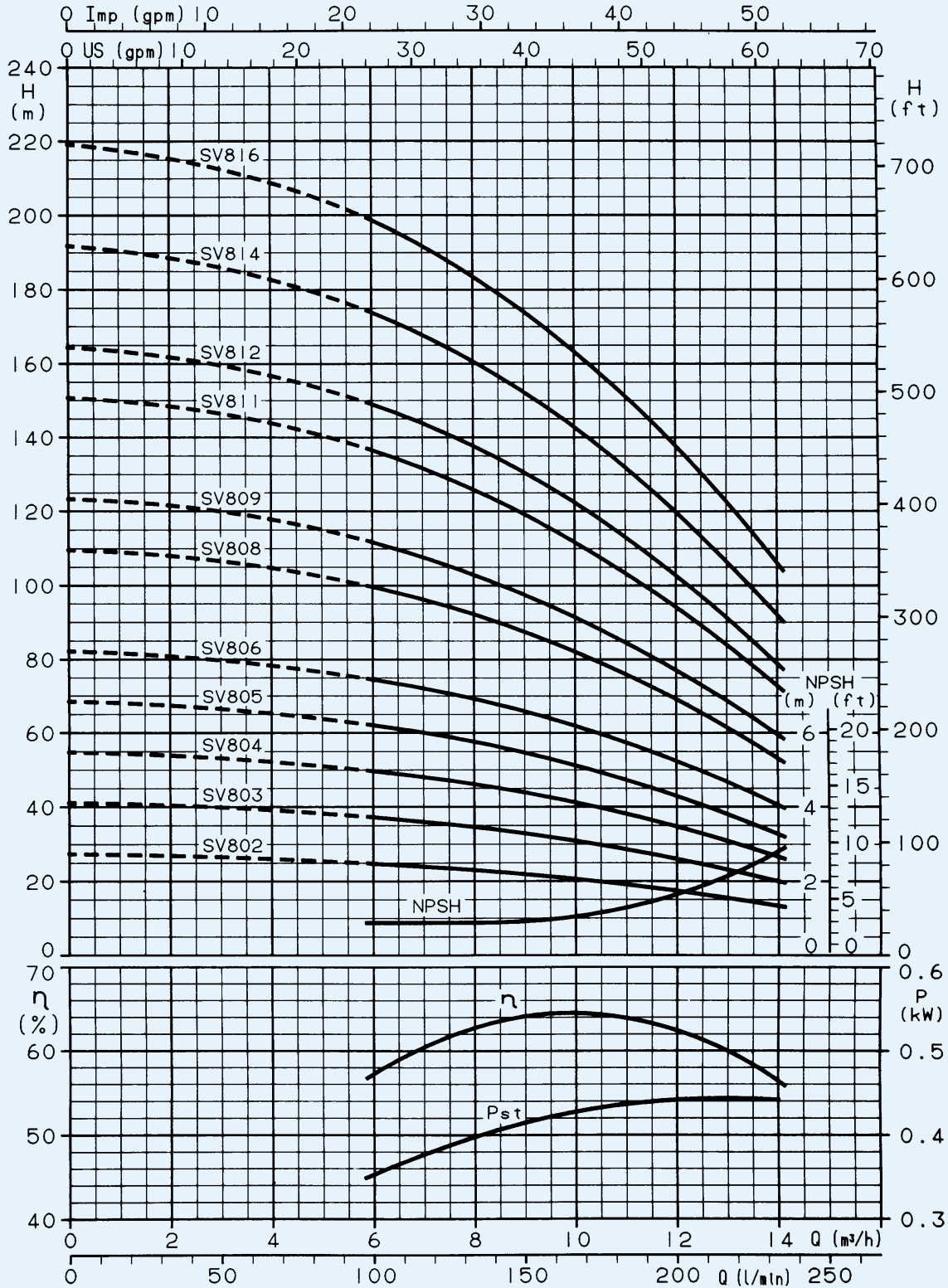
**SV4 SERIES
OPERATING CHARACTERISTICS AT 2900 rpm 50 Hz**



These performances are valid for liquids with density $\rho = 1.0 \text{ kg/dm}^3$ and kinematic viscosity $\gamma = 1 \text{ mm}^2/\text{sec}$.



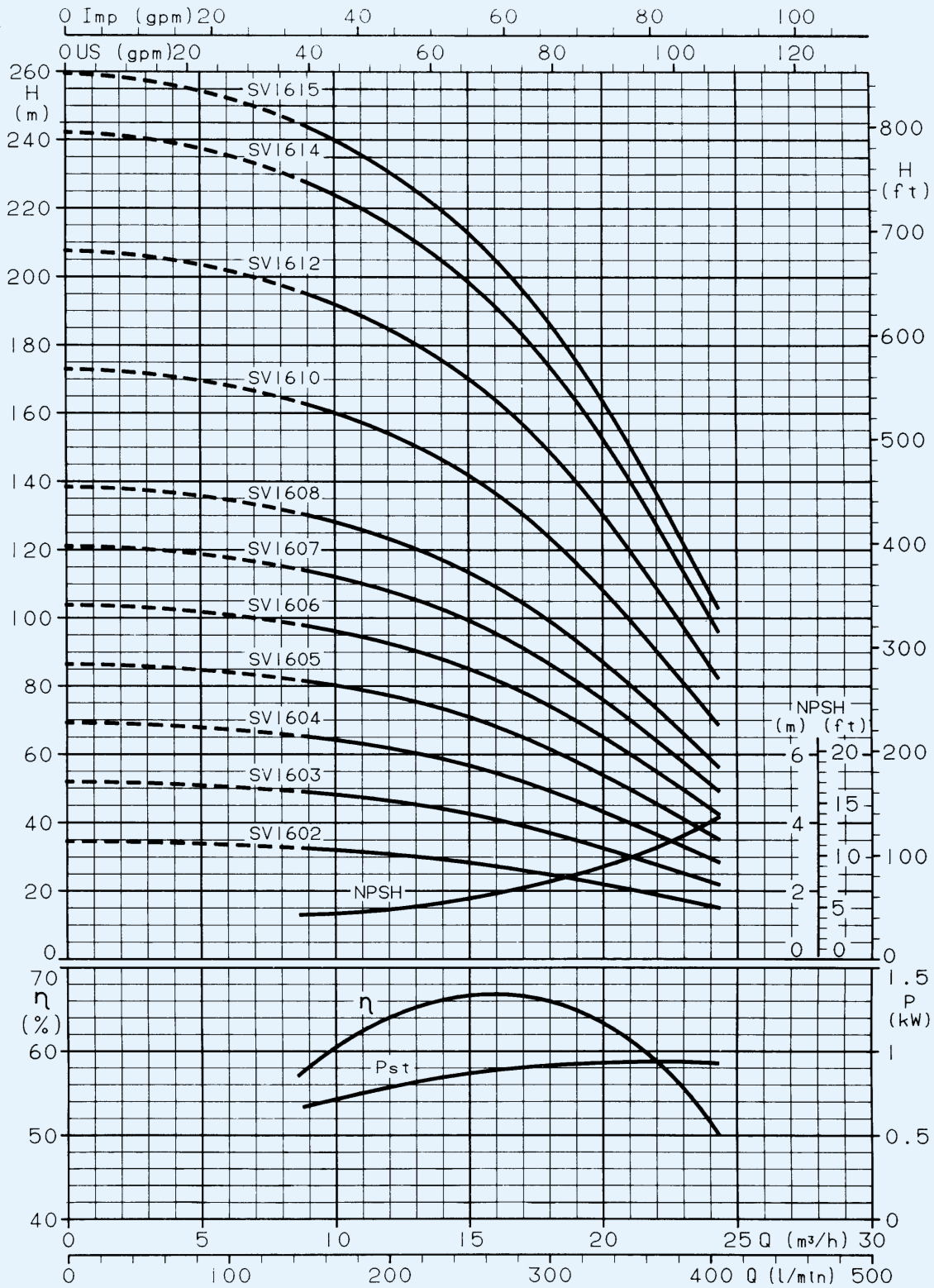
SV8 SERIES OPERATING CHARACTERISTICS AT 2900 rpm 50 Hz



These performances are valid for liquids with density $\rho = 1.0 \text{ kg/dm}^3$ and kinematic viscosity $\gamma = 1 \text{ mm}^2/\text{sec}$.

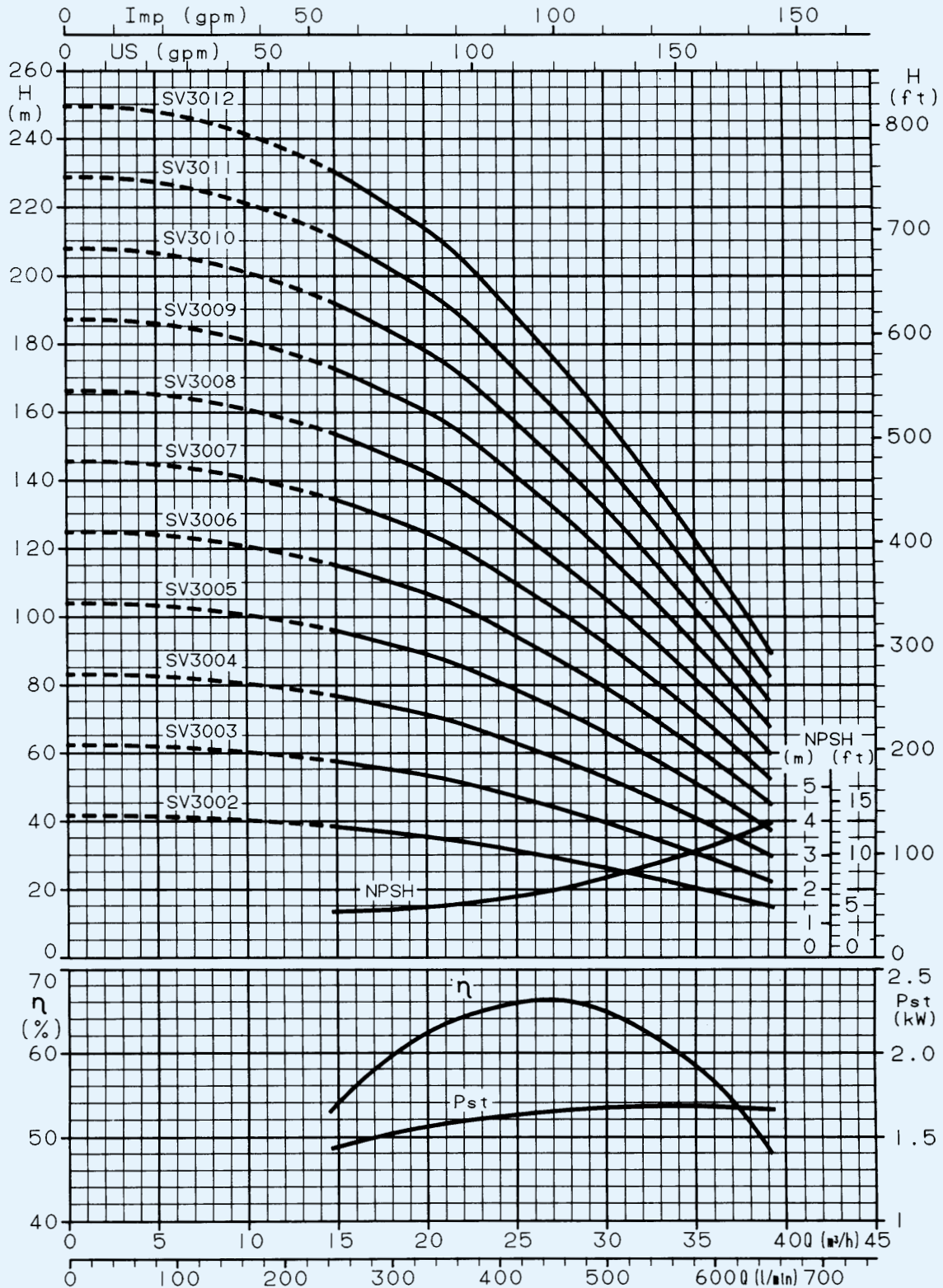


SV16 SERIES OPERATING CHARACTERISTICS AT 2900 rpm 50 Hz



These performances are valid for liquids with density $\rho = 1.0 \text{ kg/dm}^3$ and kinematic viscosity $\gamma = 1 \text{ mm}^2/\text{sec}$.

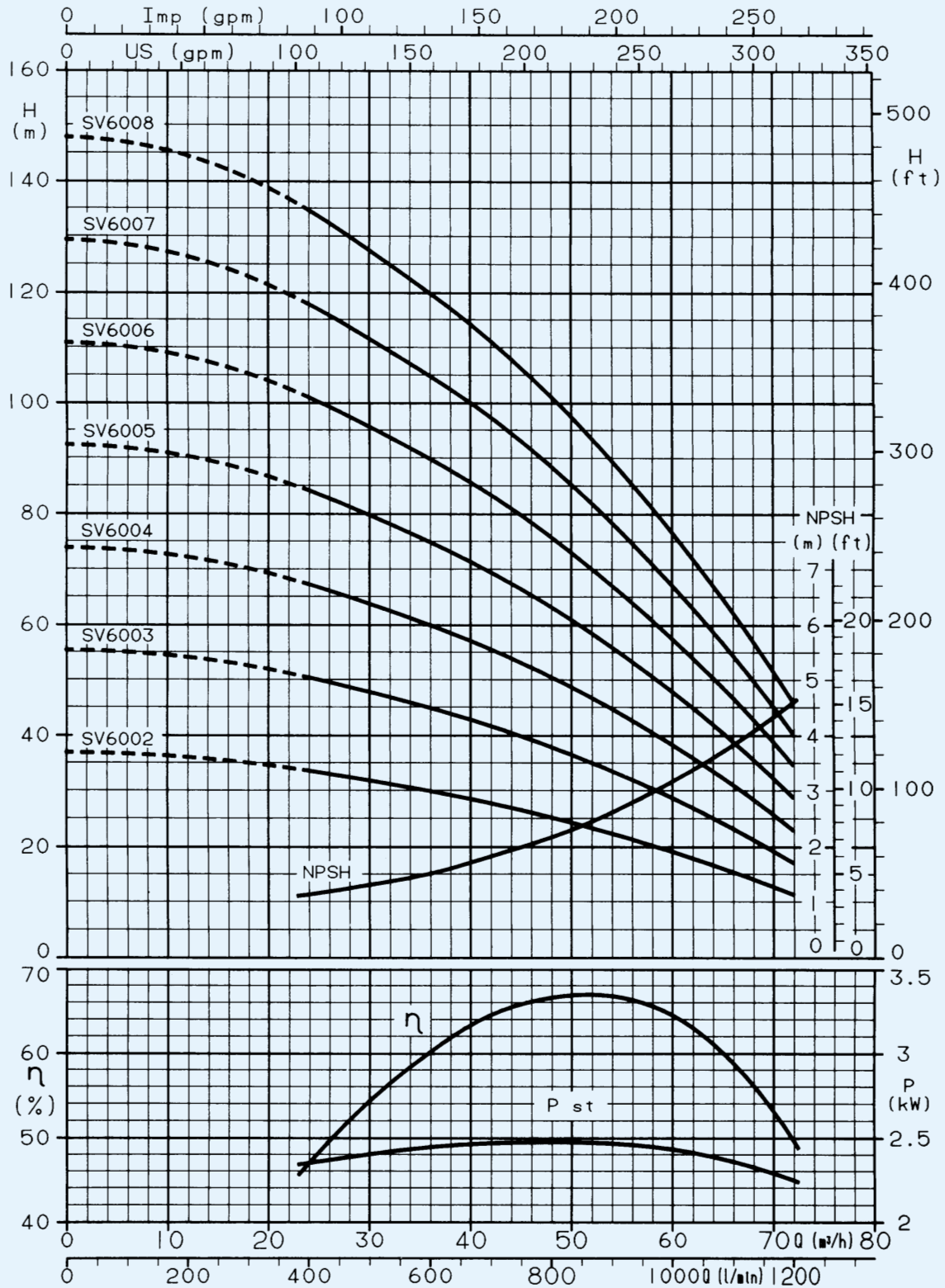
SV30 SERIES OPERATING CHARACTERISTICS AT 2900 rpm 50 Hz



These performances are valid for liquids with density $\rho = 1.0 \text{ kg/dm}^3$ and kinematic viscosity $\gamma = 1 \text{ mm}^2/\text{sec}$.



**SV60 SERIES
OPERATING CHARACTERISTICS AT 2900 rpm 50 Hz**



These performances are valid for liquids with density $\rho = 1.0 \text{ kg/dm}^3$ and kinematic viscosity $\gamma = 1 \text{ mm}^2/\text{sec}$.

SV2 SERIES (~ 2900 rpm)

MAIN CHARACTERISTICS

Working delivery 1.2 to 4.2 m³/h.

Maximum operating pressure, including water hammer on suction side:

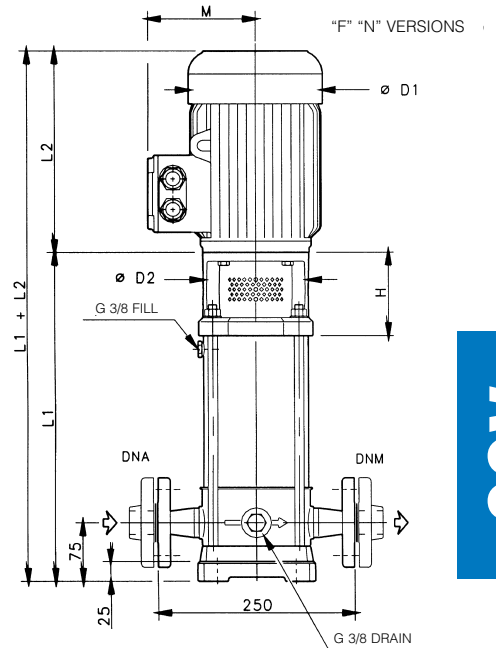
- Pumps with oval flanges 16 bar.
- Pumps with round flanges 25 bar.

AVAILABLE VERSIONS

- "F" : In-line ports, round flanges from SV202 to SV224.
- "T" : In-line ports, oval flanges from SV202 to SV214.
- "R" : Overlaying ports, round flanges from SV204 to SV224.
- "N" : In-line ports, round flanges made of AISI 316 from SV202 to SV224.

TABLE OF MATERIALS

PART	"F" "R" "T" MATERIALS	"N" MATERIALS
Impeller	AISI 316 L	
Diffuser and upper spacer	AISI 304	AISI 316 L
Shaft	AISI 304	AISI 316
Outer sleeve	AISI 304	AISI 316 L
Pump body	AISI 304	AISI 316 L
Shaft sleeve	TUNGSTEN CARBIDE	
Bushing	CERAMIC	
Mechanical seal	TUNGSTEN CARBIDE/CARBON/EPDM	
Elastomers	EPDM	
Fill/drain plugs	AISI 316	
Adapter	250 CAST IRON	
Coupling	ALUMINIUM	
Coupling protection	AISI 304	
Seal holding protection	AISI 304	AISI 316 L
Base mount	ALUMINIUM	

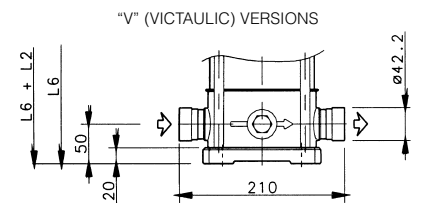
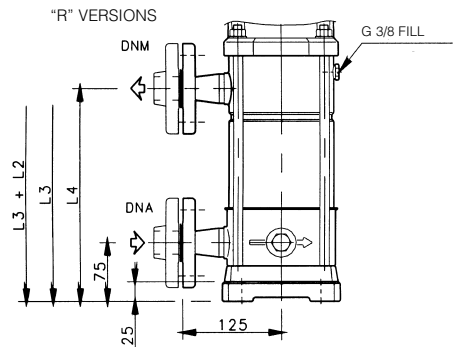


ELECTRICAL SPECIFICATIONS

PUMP TYPE	MOTOR POWER	INPUT CURRENT In Amp.					CAPACITOR		Is/In		
		kW	SIZE* T M	THREE-PHASE			SINGLE-PHASE 220-240V	μF	V	THREE-PHASE 220-240V 380-415V	SINGLE-PHASE 220-240V
				Δ 220-240V	Y 380-415V	Δ 380-415V					
SV202F03T	0,37			1,9-1,9	1,1-1,1		2,5-2,6	12,5	450	4,5-4,8	2,8-3,1
SV203F03T	0,37	71		1,9-1,9	1,1-1,1		2,5-2,6	12,5	450	4,5-4,8	2,8-3,1
SV204F05T	0,55			2,6-2,6	1,5-1,5		3,5-3,6	18	450	5-5,6	3,5-3,6
SV205F07T	0,75			3,5-3,5	2-2		4,6-4,7	22	450	5,6-6,1	3,4-3,9
SV206F07T	0,75			3,5-3,5	2-2		4,6-4,7	22	450	5,6-6,1	3,4-3,9
SV207F11T	1,1			4,5-4,5	2,6-2,6		6,5-6,8	30	450	6,1-6,6	3,9-4,1
SV208F11T	1,1			4,5-4,5	2,6-2,6		6,5-6,8	30	450	6,1-6,6	3,9-4,1
SV209F11T	1,1			4,5-4,5	2,6-2,6		6,5-6,8	30	450	6,1-6,6	3,9-4,1
SV211F15T	1,5			6,2-6	3,6-3,5		9-8,7	40	450	6,3-6,9	3,7-4,5
SV212F15T	1,5			6,2-6	3,6-3,5		9-8,7	40	450	6,3-6,9	3,7-4,5
SV214F22T	2,2			8,5-8,3	4,9-4,8		13-12,5	50	450	6,5-7,3	3-3,6
SV216F22T	2,2			8,5-8,3	4,9-4,8		13-12,5	50	450	6,5-7,3	3-3,6
SV218F22T	2,2			8,5-8,3	4,9-4,8		13-12,5	50	450	6,5-7,3	3-3,6
SV220F30T	3			11,2-10,9	6,5-6,3					6,5-7,3	
SV222F30T	3			11,2-10,9	6,5-6,3					6,3-7,3	
SV224F30T	3			11,2-10,9	6,5-6,3					6,3-7,3	

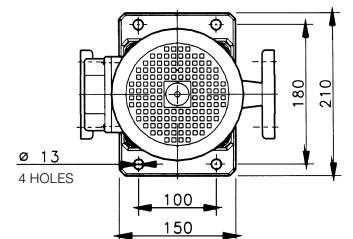
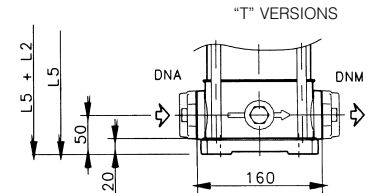
Alternative: "T" "R" "N" versions, M Motor.

* R = Reduced size of motor casing as compared to shaft extension and flange.



DIMENSIONS AND WEIGHTS

PUMP TYPE	DNA DNM	DIMENSIONS IN mm											WEIGHT (Kg)			
		L1	L2 SINGLE-PHASE THREE-PHASE	L3	L4	L5	L6	M SINGLE-PHASE THREE-PHASE	D1 SINGLE-PHASE THREE-PHASE	D2	H	PUMP	ELECTRIC PUMP			
SV202F03T	285			-	-	260	260								9,5	17,5
SV203F03T	310	216	216	-	-	285	285	109	105	141	141	105	93		10	18
SV204F05T	335			335	200	310	310								10,5	19
SV205F07T	370			370	225	345	345	109	105	141	141				11,5	21,5
SV206F07T	395	232	232	395	250	370	370								12	22
SV207F11T	420			420	275	395	395					120	103		12,5	23
SV208F11T	445	242	242	445	300	420	420	120	116	160	160				13	23,5
SV209F11T	470			470	325	445	445								13,5	24
SV211F15T	530			530	375	505	505								15	31
SV212F15T	555			555	400	530	530		116		160				15,5	31,5
SV214F22T	605	280		605	450	580	580	125		176		140	113		16,5	33,5
SV216F22T	655			655	500	-	630		121		176				17,5	34,5
SV218F22T	705			705	550	-	680								18,5	35,5
SV220F30T	765			765	600	-	740								20	42
SV222F30T	815			815	650	-	790		121		176	160	123		21	43
SV224F30T	865			865	700	-	840								22	44



SV4 SERIES (~ 2900 rpm)

MAIN CHARACTERISTICS

Working delivery 2.4 to 8 m³/h.

Maximum operating pressure, including water hammer on suction side:

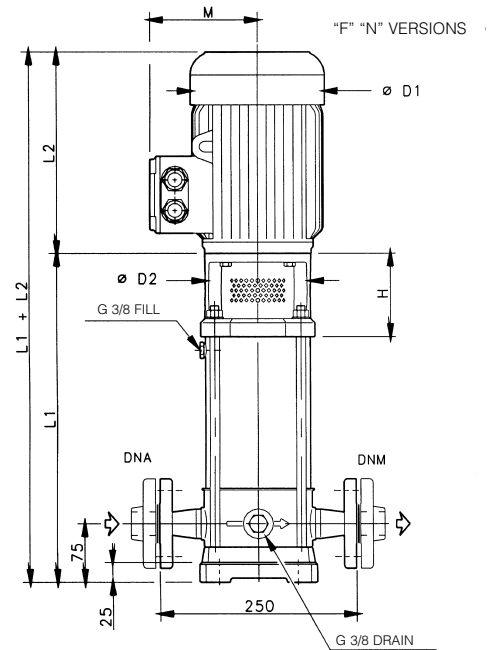
- Pumps with oval flanges 16 bar.
- Pumps with round flanges 25 bar.

AVAILABLE VERSIONS

- "F" : In-line ports, round flanges from SV402 to SV424.
- "T" : In-line ports, oval flanges from SV402 to SV414.
- "R" : Overlaying ports, round flanges from SV405 to SV424.
- "N" : In-line ports, round flanges made of AISI 316 from SV402 to SV424.

TABLE OF MATERIALS

PART	"F" "R" "T" MATERIALS	"N" MATERIALS
Impeller	AISI 316 L	
Diffuser and upper spacer	AISI 304	AISI 316 L
Shaft	AISI 304	AISI 316
Outer sleeve	AISI 304	AISI 316 L
Pump body	AISI 304	AISI 316 L
Shaft sleeve	TUNGSTEN CARBIDE	
Bushing	CERAMIC	
Mechanical seal	TUNGSTEN CARBIDE/CARBON/EPDM	
Elastomers	EPDM	
Fill/drain plugs	AISI 316	
Adapter	250 CAST IRON	
Coupling	ALUMINIUM	
Coupling protection	AISI 304	
Seal holding disk	AISI 304	AISI 316 L
Base mount	ALUMINIUM	

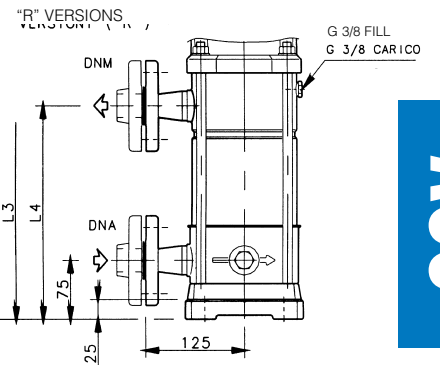


ELECTRICAL SPECIFICATIONS

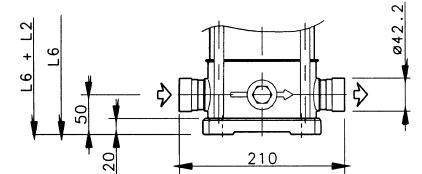
PUMP TYPE	MOTOR POWER		INPUT CURRENT In Amp.				CAPACITOR		Is/In	
			THREE-PHASE			SINGLE-PHASE	μF	V	THREE-PHASE 220-240V 380-415V	SINGLE-PHASE 220-240V
			Δ 220-240V	Y 380-415V	Δ 380-415V					
SV402F03T	0,37	71	1,9-1,9	1,1-1,1		2,5-2,6	12,5	450	4,5-4,8	2,8-3,1
SV403F05T	0,55		2,6-2,6	1,5-1,5		3,5	18	450	5-5,5	3,4-3,9
SV404F07T	0,75	80R	3,5-3,5	2-2		4,6-4,7	22	450	6,1-6,6	3,9-4,1
SV405F11T	1,1		4,5-4,5	2,6-2,6		6,5-6,8	30	450	6,1-6,6	3,9-4,1
SV406F11T	1,1	80	4,5-4,5	2,6-2,6		6,5-6,8	30	450	6,1-6,6	3,9-4,1
SV407F11T	1,1		4,5-4,5	2,6-2,6		6,5-6,8	30	450	6,1-6,6	3,9-4,1
SV408F15T	1,5	90R 90	6,2-6	3,6-3,5		9-8,7	40	450	6,3-6,9	3,7-4,5
SV409F15T	1,5		6,2-6	3,6-3,5		9-8,7	40	450	6,3-6,9	3,7-4,5
SV411F22T	2,2	90	8,5-8,3	4,9-4,8		13-12,5	50	450	6,5-7,3	3-3,6
SV413F22T	2,2		8,5-8,3	4,9-4,8		13-12,5	50	450	6,5-7,3	3-3,6
SV414F30T	3	100R	11,2-10,9	6,5-6,3					6,3-7,3	
SV416F30T	3		11,2-10,9	6,5-6,3					6,3-7,3	
SV418F30T	3		11,2-10,9	6,5-6,3					6,3-7,3	
SV420F40T	4					8,5-8,3			7,1-7,9	
SV422F40T	4	112R				8,5-8,3			7,1-7,9	
SV424F40T	4					8,5-8,3			7,1-7,9	

ALternative: "T" "R" "N" versions, M Motor.

* R = Reduced size of motor casing as compared to shaft extension and flange.



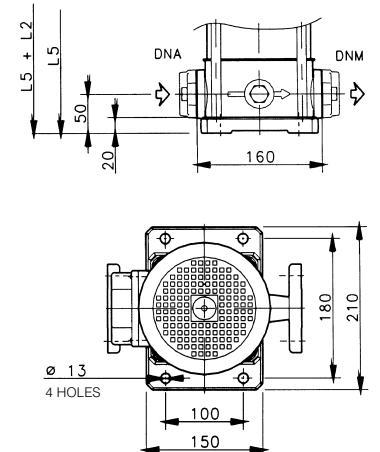
"V" (VICTAULIC) VERSIONS



DIMENSIONS AND WEIGHTS

PUMP TYPE	DNA DNM	DIMENSIONS IN mm										WEIGHTI (Kg)			
		L1	L2 SINGLE-PHASE	L2 THREE-PHASE	L3	L4	L5	L6	M SINGLE-PHASE	M THREE-PHASE	D1 SINGLE-PHASE	D1 THREE-PHASE	D2	H	PUMP
SV402F03T	285	216	216	-	-	260	260	109	105	141	141	105	93	9,5	17,5
SV403F05T	310			-	-	285	285							10	18,5
SV404F07T	345	232	232	-	-	320	320	109	105	141	141			11	21
SV405F11T	370			370	225	345	345							11,5	22
SV406F11T	395	242	242	395	250	370	370	120	116	160	160	120	103	12	22,5
SV407F11T	420			420	275	395	395							12,5	23
SV408F15T	455		255	455	300	430	430		116		160			13,5	29,5
SV409F15T	480			480	325	455	455							14	30
SV411F22T	530	280		530	375	505	505	125		176				15	32
SV413F22T	580		280	580	425	555	555		121		176			16	33
SV414F30T	615			615	450	590	590							17	39
SV416F30T	665	-	302	665	500	-	640	-	121	-	176			18	40
SV418F30T	715			715	550	-	690							19	41
SV420F40T	765			765	600	-	740					160	123	20	58
SV422F40T	815	-	312	815	650	-	790	-	136	-	193			21	59
SV424F40T	865			865	700	-	840							22,5	60,5

"T" VERSIONS



SV8 SERIES (~ 2900 rpm)

MAIN CHARACTERISTICS

Working delivery 6 to 14 m³/h

Maximum operating pressure, including water hammer on suction side:

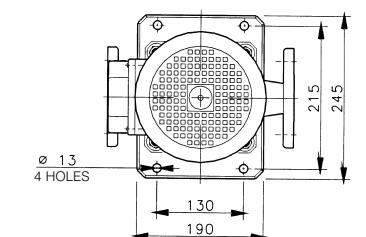
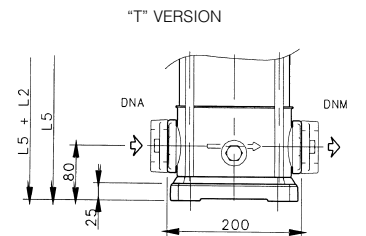
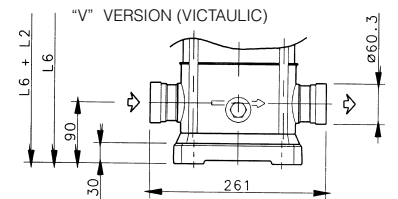
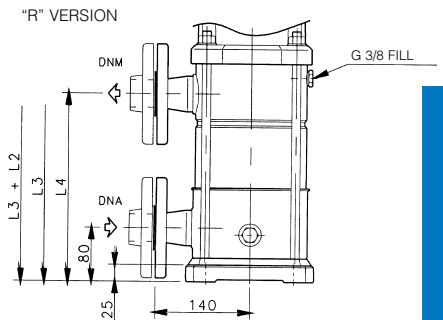
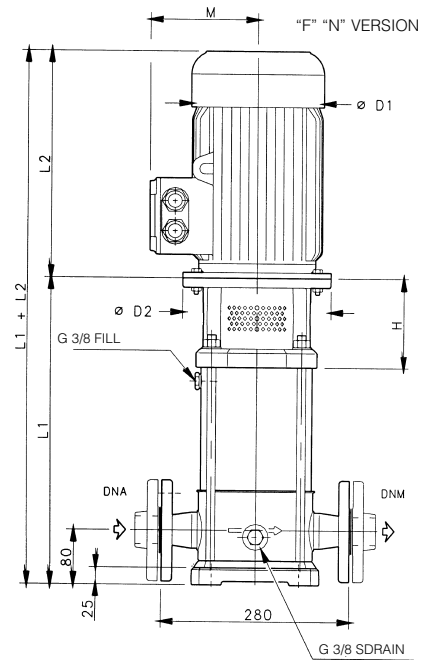
- Pumps with oval flanges 16 bar.
- Pumps with round flanges 25 bar.

AVAILABLE VERSIONS

- "F" : In-line ports, round flanges from SV802 to SV816.
- "T" : In-line ports, oval flanges from SV802 to SV811.
- "R" : Overlaying ports, round flanges from SV803 to SV816.
- "N" : In-line ports, round flanges made of AISI 316 from SV802 to SV816.

TABLE OF MATERIALS

PART	"F" "R" "T" MATERIALS	"N" MATERIALS
Impeller	AISI 316 L	
Diffuser and upper spacer	AISI 304	AISI 316 L
Shaft	AISI 304	AISI 316
Outer sleeve	AISI 304	AISI 316 L
Pump body	AISI 304	AISI 316 L
Shaft sleeve	TUNGSTEN CARBIDE	
Bushing	CERAMIC	
Mechanical seal	TUNGSTEN CARBIDE/CARBON/EPDM	
Elastomers	EPDM	
Fill/drain plugs	AISI 316	
Adapter	250 CAST IRON	
Coupling	ALUMINIUM UP TO 4 kW	
	200 CAST IRON FOR HIGHER POWER	
Coupling protection	AISI 304	
Seal holding disk	AISI 304	AISI 316 L
Base mount	ALUMINIUM	



ELECTRICAL SPECIFICATIONS

PUMP TYPE	MOTOR POWER		INPUT CURRENT In Amp.					CONDENSATORE		Is/In	
			THREE-PHASE			SINGLE-PHASE	μF	V	THREE-PHASE 220-240V 380-415V	SINGLE-PHASE 220-240V	
			Δ	Y	Δ						220-240V
SV802F11T	1,1	80	4,5-4,5	2,6-2,6		6,5-6,8	30	450	6,1-6,6	3,9-4,1	
SV803F15T	1,5	90R/90	6,2-6	3,6-3,5		9-8,7	40	450	6,3-6,9	3,7-4,5	
SV804F22T	2,2	90	8,5-8,3	4,9-4,8		13-12,5	50	450	6,5-7,3	3-3,6	
SV805F22T	2,2		8,5-8,3	4,9-4,8		13-12,5	50	450	6,5-7,3	3-3,6	
SV806F30T	3	100R	11,2-10,9	6,5-6,3					6,3-7,3		
SV808F40T	4	112R			8,5-8,3				7,1-7,9		
SV809F40T	4				8,5-8,3				7,1-7,9		
SV811F55T	5,5	132R			11,5-11,2				7,4-8,2		
SV812F55T	5,5				11,5-11,2				7,4-8,2		
SV814F75T	7,5				15,5-15				6,6-7,5		
SV816F75T	7,5				15,5-15				6,6-7,5		

Alternative: "T" "R" "N" versions, M Motor.

* R = Reduced size of motor casing as compared to shaft extension and flange.

DIMENSIONS AND WEIGHTS

PUMP TYPE	DNA DNM	DIMENSIONS IN mm											WEIGHT (Kg)			
		L1	L2 SINGLE-THREE-PHASE	L3	L4	L5	L6	M SINGLE-THREE-PHASE	D1 SINGLE-THREE-PHASE	D2	H	PUMP	ELECTRIC PUMP			
SV802F11T	Rp 1 1/2	363	242	242	-	-	363	373	120	116	160	160	120	112	15	25,5
SV803F15T		411	255	411	236	411	421	116	116	160	160	120	112	16	32	
SV804F22T		449	280	280	449	274	449	459	125	121	176	176	140	122	17	34
SV805F22T		487			487	312	487	497							18	35
SV806F30T		535	-	302	535	350	535	545	-	121	-	176			20	42
SV808F40T		611	-	312	611	426	611	621	-	136	-	193	160	132	20,5	58,5
SV809F40T		649			649	464	649	659							21,5	59,5
SV811F55T		745			745	540	745	755							28	74
SV812F55T		783	-	350	783	578	-	793	-	150	-	220	300	152	29	75
SV814F75T		859			859	654	-	869							31	81
SV816F75T		935			935	730	-	945							32,5	82,5

SV16 SERIES (~ 2900 rpm)

MAIN CHARACTERISTICS

Working delivery 8 to 24 m³/h.

Maximum operating pressure, including water hammer on suction side:

– Pumps with round flanges 25 bar.

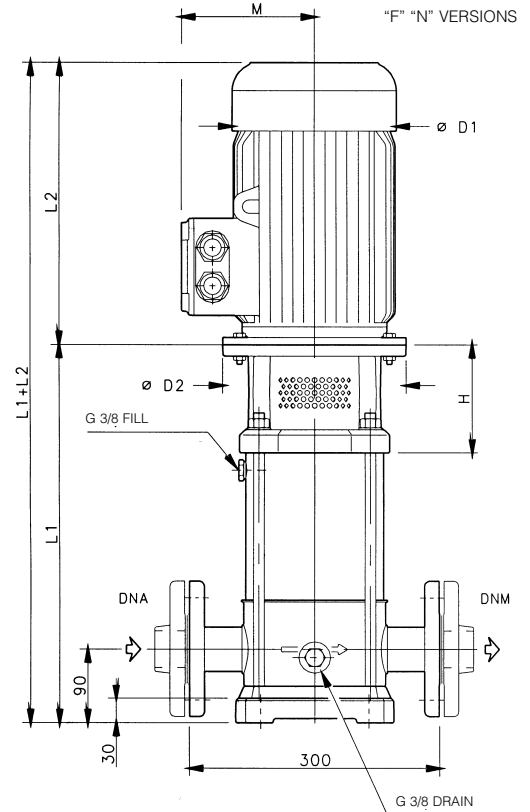
AVAILABLE VERSIONS

– “F” : In-line ports, round flanges from SV1602 to SV1615.

– “N” : In-line ports, round flanges in AISI 316 from SV1602 to SV1615.

TABLE OF MATERIALS

PART	“F” MATERIALS	“N” MATERIALS
Impeller	AISI 316 L	
Diffuser and upper spacer	AISI 304	AISI 316 L
Shaft	AISI 304	AISI 316
Outer sleeve	AISI 304	AISI 316 L
Pump body	AISI 304	AISI 316 L
Shaft sleeve	TUNGSTEN CARBIDE	
Bushing	CERAMIC	
Mechanical seal	TUNGSTEN CARBIDE/CARBON/EPDM	
Elastomers	EPDM	
Fill/drain plugs	AISI 316	
Adapter	250 CAST IRON	
Coupling	Aluminium UP TO 4 kW	
	200 CAST IRON FOR HIGHER POWER	
Coupling protection	AISI 304	
Seal holding disk	AISI 304	AISI 316 L
Base mount	ALUMINIUM	

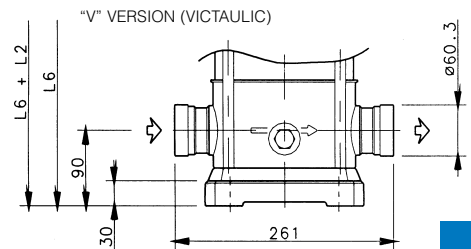


ELECTRICAL SPECIFICATIONS

PUMP TYPE	MOTOR POWER		INPUT CURRENT In Amp.				CAPACITOR		Is/In	
			THREE-PHASE			SINGLE-PHASE	μF	V	THREE-PHASE 220-240V 380-415V	SINGLE-PHASE 220-240V
			Δ	Y	Δ					
SV1602F22T	2,2	90	8,5-8,3	4,9-4,8		13-12,5	50	450	6,5-7,3	3-3,6
SV1603F30T	3	100R	11,2-10,9	6,5-6,3					6,3-7,3	
SV1604F40T	4	112R			8,5-8,3				7,1-7,9	
SV1605F55T	5,5	132R			11,5-11,2				7,4-8,2	
SV1606F55T	5,5				11,5-11,2				7,4-8,2	
SV1607F75T	7,5				15,5-15				6,6-7,5	
SV1608F75T	7,5				15,5-15				6,6-7,5	
SV1610F110T	11	160			22-21				6,4-7,5	
SV1612F110T	11				22-21				6,4-7,5	
SV1614F150T	15				28,8-27,5				7,5-8,5	
SV1615F150T	15				28,8-27,5				7,5-8,5	

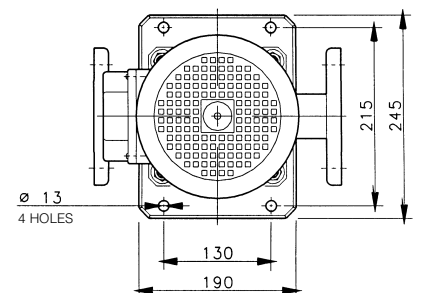
Alternative: “N” version, M Motor

* R = Reduced size of motor casing as compared to shaft extension and flange.



DIMENSIONS AND WEIGHTS

PUMP TYPE	DNA DNM	DIMENSIONS IN mm											WEIGHT (Kg)		
		L1	L2 SINGLE-PHASE	L2 THREE-PHASE	L3	L4	L5	L6	M SINGLE-PHASE	M THREE-PHASE	D1 SINGLE-PHASE	D1 THREE-PHASE	D2	H	PUMP
SV1602F22T		383	280	280			383	125	121	176	176	140	122	15	32
SV1603F30T		431		302			431		121		176			16	38
SV1604F40T		469		312			469		136		193	160	132	17,5	55,5
SV1605F55T		527					527							22	68
SV1606F55T		565					565							23	69
SV1607F75T	Rp 2"	603		350			603		150		220	300	152	24	74
SV1608F75T		641												25	75
SV1610F110T		749					749							34	119
SV1612F110T		825					825							36	121
SV1614F150T		901		495			901		228		316	350	184	38	130
SV1615F150T		939					939							39	131



SV30 SERIES (~ 2900 rpm)

MAIN CHARACTERISTICS

Working delivery 15 to 39 m³/h.

Maximum operating pressure, including water hammer on suction side:

- Up to SV3006 16 bar.

- From SV3007 to SV3012 25 bar.

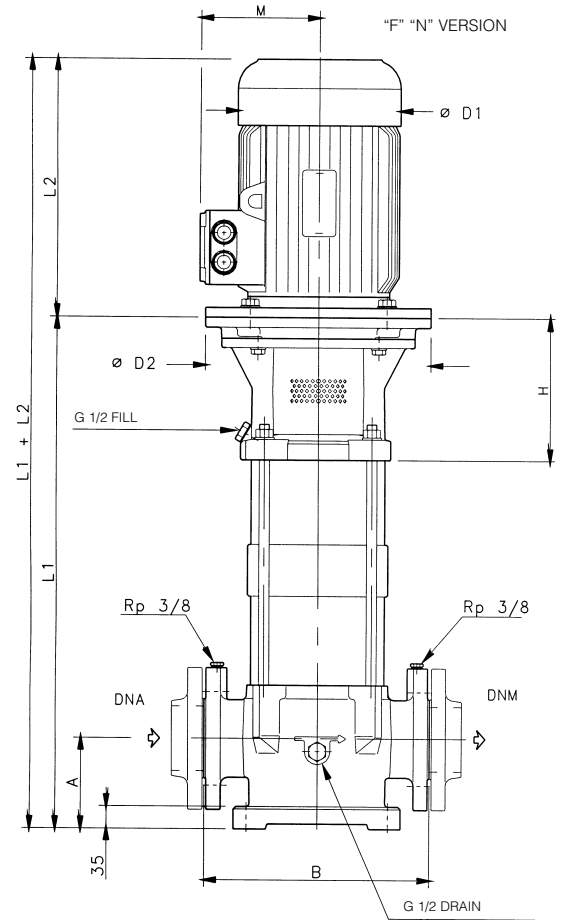
AVAILABLE VERSIONS

- "F" : In-line ports, round flanges from SV3002 to SV3012.

- "N" : In-line ports, round flanges in AISI 316 from SV3002 to SV3012.

TABLE OF MATERIALS

PART	"F" MATERIALS	"N" MATERIALS
Impeller	AISI 316 L	
Diffuser and upper spacer	AISI 316 L	
Shaft	AISI 431	AISI 316
Outer sleeve	AISI 304	AISI 316 L
Pump body	250 CAST IRON	CF - 8M (AISI 316 L)
Shaft sleeve	TUNGSTEN CARBIDE	
Bushing	CERAMIC	
Mechanical seal	SILICON/CARBIDE/CARBON/EPDM	
Elastomers	EPDM	
Fill/drain plugs	NICKEL PLATED BRASS	AISI 316
Spider	250 CAST IRON	
Coupling	200 CAST IRON	
Coupling protection	AISI 304	
Seal holding disk	-	AISI 316 L



ELECTRICAL SPECIFICATIONS

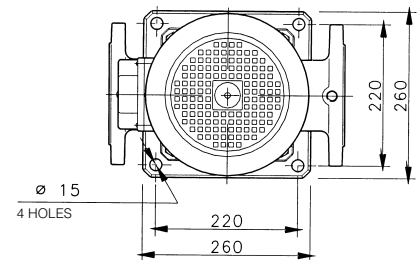
PUMP TYPE	MOTOR POWER		INPUT CURRENT In Amp.			Is/In
			THREE-PHASE			
			Δ 220-240V	Y 380-415V	Δ 380-415V	
SV3002F40T	4	112R			8,5-8,3	7,1-7,9
SV3003F55T	5,5	132R			11,5-11,2	7,4-8,2
SV3004F75T	7,5				15,5-15	6,6-7,5
SV3005F110T	11	160			22-21	6,4-7,5
SV3006F110T	11				22-21	6,4-7,5
SV3007F150T	15				28,8-27,5	7,5-8,5
SV3008F150T	15				28,8-27,5	7,5-8,5
SV3009F150T	15				28,8-27,5	7,5-8,5
SV3010F185T	18,5				34,3-32,6	7,6-9
SV3011F185T	18,5				34,3-32,6	7,6-9
SV3012F220T	22		180			42-40

Alternative: "N" version.

* R = Reduced size of motor casing as compared to shaft extension and flange.

DIMENSIONS AND WEIGHTS

PUMP TYPE	DNA DNM	DIMENSIONS IN mm								WEIGHT (Kg)	
		L1	L2	A	B	M	D1	D2	H	PUMP	ELECTRIC PUMP
SV3002F40T	65	588	312	105	320	136	193	160	170	48	78
SV3003F55T		680	350			150	220	300	190	56	102
SV3004F75T		752				59	109				
SV3005F110T		856	70			155					
SV3006F110T		1120	83			168					
SV3007F150T		1192	86			178					
SV3008F150T		1264	89			181					
SV3009F150T		1336	93			185					
SV3010F185T		1408	96			195					
SV3011F185T		1480	99			198					
SV3012F220T		1552	102			216					



SV60 SERIES (~ 2900 rpm)

MAIN CHARACTERISTICS

Working delivery 24 to 72 m³/h.

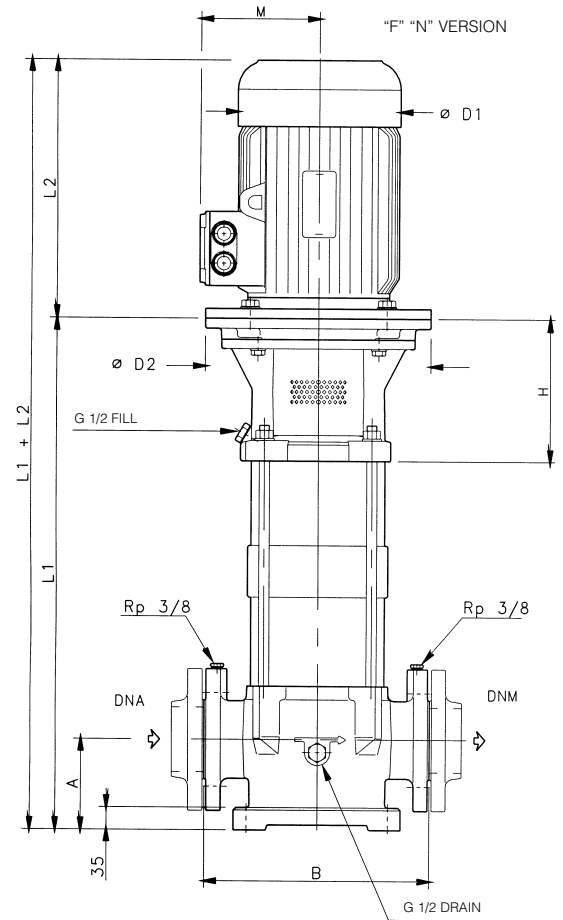
Maximum operating pressure, including water hammer on suction side:
– 16 bar.

AVAILABLE VERSIONS

- “F” : In-line ports, round flanges from SV6002 to SV6008.
- “N” : In-line ports, round flanges made of AISI 316 from SV6002 to SV6008.

TABLE OF MATERIALS

PART	“F” MATERIALS	“N” MATERIALS
Impeller	AISI 316 L	
Diffuser and upper spacer	AISI 316 L	
Shaft	AISI 431	AISI 316
Outer sleeve	AISI 304	AISI 316 L
Pump body	250 CAST IRON	CF - 8M (AISI 316 L)
Shaft sleeve	TUNGSTEN CARBIDE	
Bushing	CERAMIC	
Mechanical seal	SILICON CARBIDE/CARBON/EPDM	
Elastomers	EPDM	
Fill/drain plugs	NICKEL PLATED BRASS	AISI 316
Adapter	250 CAST IRON	
Coupling	200 CAST IRON	
Coupling protection	AISI 304	
Seal holding disk	–	AISI 316 L



ELECTRICAL SPECIFICATIONS

PUMP TYPE	MOTOR POWER		INPUT CURRENT In Amp.			Is/In
			THREE-PHASE			
			Δ 220-240V	Y 380-415V	Δ 380-415V	
SV6002 F55T	5,5	132R			11,5-11,2	7,4-8,2
SV6003 F75T	7,5				15,5-15	6,6-7,5
SV6004 F110T	11	160			22-21	6,4-7,5
SV6005 F150T	15				28,8-27,5	7,5-8,5
SV6006 F150T	15				28,8-27,5	7,5-8,5
SV6007 F185T	18,5				34,3-32,6	7,6-9
SV6008 F220T	22		180			42-40

Alternative: “N” version.

* R = Reduced size of motor casing as compared to shaft extension and flange.

DIMENSIONS AND WEIGHTS

PUMP TYPE	DNA DNM	DIMENSIONS IN mm								WEIGHT (Kg)			
		L1	L2	A	B	M	D1	D2	H	PUMP	ELECTRIC PUMP		
SV6002 F55T	100	658	350	140	365	150	220	300	190	57	103		
SV6003 F75T		730								60	110		
SV6004 F110T		834	495			228		316		350	222	71	156
SV6005 F150T		906										74	166
SV6006 F150T		1170				87		179					
SV6007 F185T		1242				90		189					
SV6008 F220T		1314				245		94		208			

